

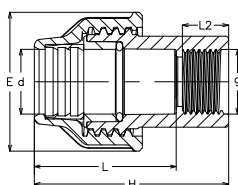
Fittings for House Service Connection

The continuous water supply (24x7) with constant positive pressure is most appropriate to achieve objectives of Smart Cities planned by GOI. The success of 24x7 ensuring uninterrupted water supply at desired minimum pressure reducing the total water consumption by 30% minimum to 50% maximum has been proved by using JAIN HDPE pipes

in numerous scheme all over India, by Utility Providing Authorities in several States. The Smart City goal of providing protected potable water with high hygienity to every house hold can be achieved only by using HDPE/ MDPE pre-compounded pipes and fittings. JAIN fittings required for Leak-Proof HSC connections as shown below:



FEMALE THREADED ADAPTOR

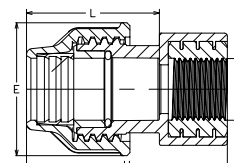


Size (mm x inch)	Code	E	L	H	L2
20 x ½"	CFA20	45	46	63	15
25 x ¾"	CFA25	53	64	87	20
32 x ¾"	CFA3234	61	62	83	18
32 x 1"	CFA32	61	57	83	22

Note : Can also be supplied from 20 mm to 110 mm on demand



FEMALE THREADED ADAPTOR (BRASS INSERT)

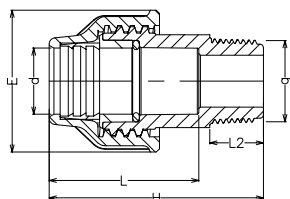


Size (mm x inch)	Code	E	L	H
20 x ½"		45	45	68

Note : Can also be supplied from 20 mm to 110 mm on demand



MALE THREADED ADAPTOR

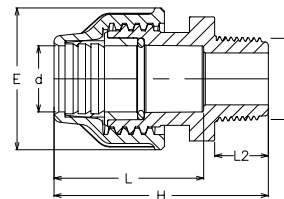


Size (mm x inch)	Code	E	H	L	L2
20 x ½"	CFA20	45	67	48	16
25 x ¾"	CFA25	53	74	52	19
32 x 1"	CFA32	61	86	65	18
40 x 1 ¼"		77	90	69	17
50 x 1 ½"		94	106	77	23
63 x 2"		109	123	92	23
75 x 2 ½"		129	141	107	28

Note : Can also be supplied from 20 mm to 110 mm on demand



REDUCING MALE THREADED ADAPTOR

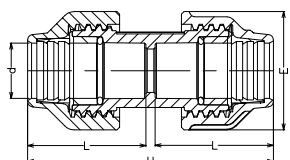


Size (mm x inch)	Code	E	H	L	L2
20x ¾"	CFA2034	45	68	48	17
32 x ¾"	CFA3234	61	86	65	18

Note : Can also be supplied from 20 mm to 110 mm on demand



COMPRESSION JOINER

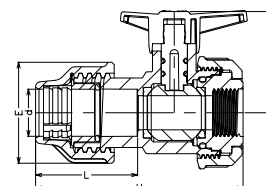


Size (mm)	Code	E	H	L
20	CJ20	45	94	45
25	CJ25	53	109	53
32	CJ32	61	128	58
40	CJ40	79	162	79
50	CJ50	94	181	89
63	CJ63	109	192	92
75	CJ75	129	222	107

Note : Can also be supplied from 20 mm to 110 mm on demand



JAIN BALL VALVE- SU COMPRESSION X FEMALE THREADED

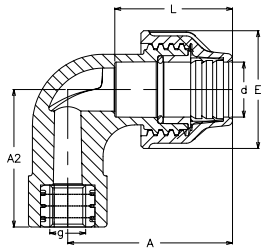


Size (mm)	Code	E	H	L	A
20	SUV20HFC	45	93	46	45
25	SUV25HFC	53	113	54	54
32	SUV32HFC	61	126	57	59

Note : Can also be supplied from 20 mm to 110 mm on demand



90° FEMALE THREADED ELBOW (BRASS INSERT)

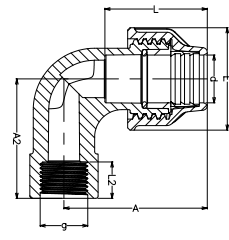


Size (mm x inch)	Code	E	L	A	A2
20 x 1/4"		45	45	63	53
20 x 1/2"		45	45	63	57
25 x 3/4"		53	53	74	65

Note : Can also be supplied from 20 mm to 110 mm on demand



90° FEMALE THREADED ELBOW

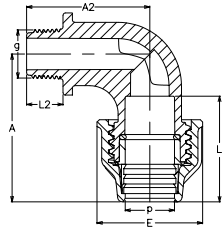


Size (mm x inch)	Code	E	L	A	L2	A2
20 X 1/2"	CFTE201245	45	45	63	16	53
20 X 3/4"	CFTE203445	45	45	63	18	53
25 x 3/4"	CFTE253445	53	53	74	21	57

Note : Can also be supplied from 20 mm to 110 mm on demand



90° MALE THREADED ELBOW

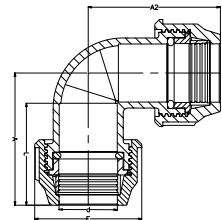


Size (mm x inch)	Code	E	L	A	A2
20 x 1/2"	CMTE20	45	45	63	53
25 x 3/4"	CMTE25	53	53	74	60
32 x 1"	CMTE32	61	64	82	68

Note : Can also be supplied from 20 mm to 110 mm on demand



90° COMPRESSION ELBOW

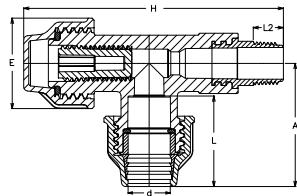


Size (mm)	Code	E	L	A	A2
20	CE20	45	48	61	47
25	CE25	53	51	67	48
32	CE32	61	60	79	55
40	CE40	79	80	101	74
50	CE050	94	90	116	85
63	CE063	109	97	133	99

Note : Can also be supplied from 20 mm to 110 mm on demand



FERRULE WITH MALE THREADED (BRASS INSERT)

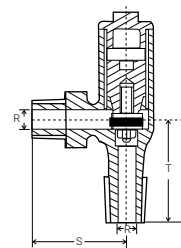


Size (mm)	Code	E	H	L	A	L2
20		45	129	45	61	15

Note : Can also be supplied from 20 mm to 110 mm on demand



FERRULE WITH MALE THREADED * (BRASS INSERT)



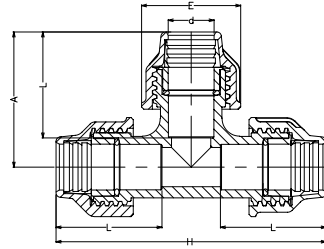
Size (mm)	R (Minimum) (mm)	S (Minimum) (mm)	T (Minimum) (mm)
8	8	50	55
10	8.8	50	55
15	12.3	55	60
20	17.8	60	65
25	24.5	70	75
32	30.8	85	90
40	36.8	95	100
50	46.8	115	120

Note: * Dimensions are subject to change.

• All Dimensions are in mm



COMPRESSION TEE

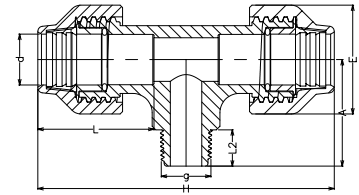


Size (mm)	Code	E	H	L	A
20	CT20	45	123	48	61
25	CT25	53	134	51	67
32	CT32	61	158	60	79
40	CT40	79	202	68	101
50	CT050	94	231	78	116
63	CT063	109	264	100	132

Note : Can also be supplied from 20 mm to 110 mm on demand



COMPRESSION TEE WITH BRANCH MALE THREADED

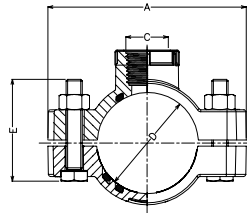


Size (mm x inch)	Code	E	L	A	L2	H
20 x 1/2"	CTT20	45	48	44	15	123
25 x 3/4"	CTT25	53	51	67	17	134
32 x 1"	CTT32	61	53	58	22	158

Note : Can also be supplied from 20 mm to 110 mm on demand



CLAMP SERVICE SADDLE (WITH REINFORCED RING)

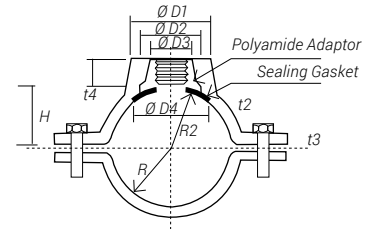


Code	Size (mm x inch)		A	E	No. of Bolt
	D	C			
20	20	1/2"	60.8	M6x30	2
25	25	1/2", 3/4"	70.8	M6x30	2
32	32	1/2", 3/4", 1"	80.0	M8x45	2
40	40	1/2", 3/4", 1"	81.0	M8x45	2
50	50	1/2", 3/4", 1", 1 1/4"	98.0	M8x45	4
63	63	1/2", 3/4", 1", 1 1/4", 1 1/2"	115.0	M8x45	4
75	75	1/2", 3/4", 1", 1 1/4", 1 1/2", 2"	127.1	M8x45	4
90	90	1/2", 3/4", 1", 1 1/4", 1 1/2", 2"	145.0	M8x55	4
110	110	1/2", 3/4", 1", 1 1/4", 1 1/2", 2"	174.5	M8x55	4

Note : Can also be supplied from 20 mm to 110 mm on demand



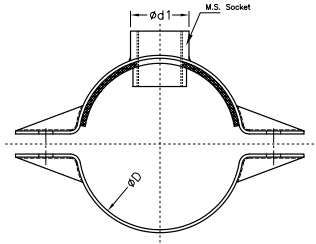
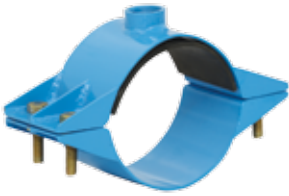
METAL SERVICE SADDLE



Nominal Size DN	Dimensions of Type A				
	R	R2	Hole.d	Bolt Size x Length mm	No.
80	49	53	15	M12x76	2
100	63	53	15	M12x77	2
150	90	94	18	M12x78	2
200	118	94	18	M16x76	2
250	145	94	19	M16x77	2
300	175	94	19	M16x78	2

Ductile Iron (S.G.) Saddle (D1)								
D1	D2	D3	D4	t1	t2	t3	t4	H
Min. Value	Min. Value	Min. Value	Min. Value	Min. Thick	Min. Thick	Min. Thick	Min. Thick	
72	52	44	65	11	4	12	6	40
72	52	44	65	11	4.5	13	7	48
72	52	44	65	11	5	13	7	75
75	52	44	65	11	5	14	7	101
77	52	44	65	11	5.5	14	8	126
77	52	44	65	11	5.5	14	8	150

Note: All Diemensions are in mm

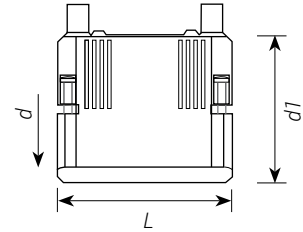


METAL SERVICE SADDLE

Size [mm]	Socket size
40	3/4"
50	3/4", 1/2", 1"
63	3/4", 1/2", 1"
75	3/4", 1", 1.5", 2"
90	3/4", 1", 1.5", 2"
110	3/4", 1", 1.5", 2"
125	3/4", 1", 1.5", 2", 2.5"
140	3/4", 1", 1.5", 2", 2.5"
160	3/4", 1", 1.5", 2", 3", 4"
180	3/4", 1", 1.5", 2", 3", 4"
200	3/4", 1", 1.5", 2", 3", 4"
225	3/4", 1", 1.5", 2", 3", 4"

Size [mm]	Socket size
250	1", 2", 3", 4"
315	1", 2", 3", 4", 6"
355	1", 2", 3", 4", 6"
400	1", 2", 3", 4", 6"
450	1", 2", 3", 4", 6"
500	1", 2", 3", 4", 6"

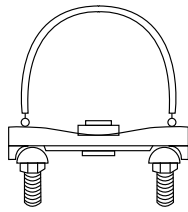
Service Saddle will also make as per requirement



COUPLER
with integral pipe fixation

- PE 100 SDR 11 (ISO S5)
- 10 bar Water / Gas
- 4 mm pin connectors
- Limited path fusion indicators
- Removable centre stop

d [mm]	Code	Weight [kg]	d1	L
20	753 911 606	0.053	31	70
25	753 911 607	0.050	36	70
32	753 911 608	0.071	44	72
40	753 911 609	0.095	54	80
50	753 911 610	0.131	66	88
63	753 911 611	0.194	81	96

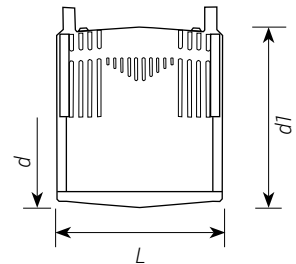


STRAP SADDLE *

- Body made of Ductile Iron.
- Most economical yet durable models.
- Totally indigenous sturdier design – tested for 16 kg/cm 2 of water pressure to ensure everlasting performance.
- No skilled labour required for installation and thus saves on cost and valuable time.
- Suitable for DI/CI/HDP/PVC pipe and hence saves on inventory cost.
- Suitable for pipe diameters from 50 to 600 mm diameter and hence less inventory carrying cost.
- Easy to install in the field.
- All other durable material - Seal of Nitrile/ EPDM and rest of the hardware & strap of SS (304).

Specification	Details	Remarks
Colour	AIVA Blue	
Standard	PN 10 (Composite), PN 16 (DI)	
Suitable for	100 to 600mm pipe diameter	Strap length varies according to pipe diameter
Testing Pressure	10 bars for composite & 16 bar for DI	
Certification	CE	

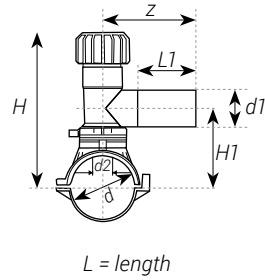
Note: * Dimensions are subject to change.



COUPLER

- PE 100 SDR 11 (ISO S5)
- 10 bar Water / Gas
- 4 mm pin connectors
- Limited path fusion indicators
- Removable centre stop up to d160

d [mm]	Code	Weight [kg]	d1	L
75	753 911 612	0.282	96	110
90	753 911 612	0.406	113	125
110	753 911 612	0.692	138	145
125	753 911 612	0.718	154	156
140	753 911 612	0.945	172	166
160	753 911 612	1.362	196	180
180	753 911 612	1.747	219	192
200	753 911 612	1.866	244	208
225	753 911 612	3.329	273	225
250	753 911 612	4.678	304	248
280	753 911 612	7.500	340	252
315	753 911 612	8.142	382	267

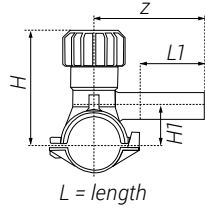


**TAPPING SADDLE
with 360° rotatable outlet**

- PE 100 SDR 11 (ISO S5)
- 10 bar Water / Gas
- With integrated cutter to tap live mains under pressure
- Complete with lower part
- 4 mm pin connectors
- Limited path fusion indicators
- Long fusion outlet
- O-ring-sealed screw cap
- d315 - 400 mm: application is limited on pipes d355 and d400 mm. Not suitable for pipes if larger wall thickness than SDR 17 pipes.
- *moulded-on lower clamp
- **Delivery without lower part for assembling as Top Load with tool no. 799.350.475; angle adaptor (799.350.340) for fusion cable required

d [mm]	d1 [mm]	Code	Weight [kg]	d2 [mm]	H [mm]	H1 [mm]	L [mm]	L1 [mm]	z [mm]	
63	20	193 131 402	0.697	32	186	108	165	71	130	
63	25	193 131 403	0.637	32	186	108	165	71	130	
63	32	193 131 404	0.701	32	186	108	165	76	130	
63	40	193 131 405	0.718	32	186	108	165	81	137	
63	63	193 131 437	1.426	32	134	112	165	100	160	
75	20	193 131 442	0.831	32	191	113	165	71	130	
75	25	193 131 443	0.830	32	191	113	165	71	130	
75	32	193 131 444	0.812	32	191	113	165	76	130	
75	40	193 131 445	0.849	32	191	113	165	81	137	
75	63	193 131 447	1.549	32	240	118	165	100	160	
90	20	193 131 452	0.794	32	199	121	165	71	130	
90	25	193 131 453	0.790	32	199	121	165	71	130	
90	32	193 131 454	0.770	32	199	121	165	76	130	
90	40	193 131 455	0.811	32	199	121	165	81	137	
90	63	193 131 457	1.494	32	248	126	165	100	160	
*	110	20	193 131 462	0.826	32	209	131	165	71	130
*	110	25	193 131 463	0.808	32	209	131	165	71	130
*	110	32	193 131 464	0.831	32	209	131	165	76	130
*	110	40	193 131 465	0.805	32	209	131	165	81	137
*	110	63	193 131 467	1.097	35	258	136	165	100	160

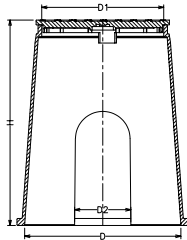
d [mm]	d1 [mm]	Code	Weight [kg]	d2 [mm]	H [mm]	H1 [mm]	L [mm]	L1 [mm]	z [mm]	
125	20	193 131 472	0.880	32	216	138	165	71	130	
125	25	193 131 473	0.878	32	216	138	165	71	130	
125	32	193 131 474	0.878	32	216	138	165	76	130	
125	40	193 131 475	0.874	32	216	138	165	81	137	
125	63	193 131 477	1.184	35	265	143	165	100	160	
140	20	193 131 482	0.887	32	233	146	165	71	130	
140	25	193 131 483	0.874	32	233	146	165	71	130	
140	32	193 131 484	0.894	32	233	146	165	76	130	
140	40	193 131 485	0.920	32	233	146	165	81	137	
140	63	193 131 487	1.180	35	273	151	165	100	160	
*	160	20	193 131 492	0.916	32	243	156	165	71	130
*	160	25	193 131 493	0.912	32	243	156	165	71	130
*	160	32	193 131 494	0.915	32	243	156	165	76	130
*	160	40	193 131 495	0.936	32	243	156	165	81	137
*	160	63	193 131 497	1.221	35	283	161	165	100	160
180	20	193 131 502	0.994	32	244	166	165	71	130	
180	25	193 131 503	1.001	32	244	166	165	71	130	
180	32	193 131 504	0.957	32	244	166	165	76	130	
180	40	193 131 505	1.007	32	244	166	165	81	137	
180	63	193 131 507	1.587	35	293	171	165	100	160	
200	20	193 131 512	1.015	32	254	176	165	71	130	
200	40	193 131 515	1.024	32	254	176	165	71	130	
200	32	193 131 514	0.985	32	254	176	165	76	130	
200	25	193 131 513	1.015	32	254	176	165	81	137	
200	63	193 131 517	1.745	35	303	181	165	100	160	
225	20	193 131 522	1.016	32	266	188	165	71	130	
225	25	193 131 523	1.025	32	266	188	165	71	130	
225	32	193 131 524	1.019	32	266	188	165	76	130	
225	40	193 131 525	1.029	32	266	188	165	81	137	
225	63	193 131 527	1.738	35	315	193	165	100	160	
250	20	193 131 532	1.025	32	279	201	165	76	130	
250	25	193 131 533	1.026	32	279	201	165	76	130	
250	32	193 131 534	0.996	32	279	201	165	76	130	
250	40	193 131 535	1.008	32	279	201	165	81	137	
250	63	193 131 537	1.733	35	328	206	165	100	160	
**	280	63	193 131 547	1.478	35	328	206	165	100	160
**	315-355	63	193 131 557	1.481	35	328	206	165	100	160
**	400	63	193 131 577	1.473	35	328	206	165	100	160



TAPPING SADDLE MONOBLOC VERSION

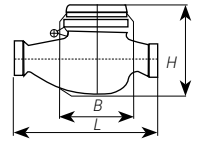
- PE 100 SDR 11 (ISO S5)
- 10 bar Water / Gas
- With integrated cutter to tap live mains under pressure
- Complete with lower part
- 4 mm pin connectors
- Limited path fusion indicators
- Long fusion outlet
- O-ring-sealed screw cap

d [mm]	d1 [mm]	Code	Weight [kg]	d2 [mm]	H [mm]	H1 [mm]	L [mm]	L1 [mm]	z [mm]
40	20	193 131 412	0.225	16	99	33	103	70	102
40	25	193 131 413	0.226	16	99	33	103	70	102
40	32	193 131 414	0.225	16	99	33	103	70	120
50	20	193 131 422	0.214	16	104	38	103	70	102
50	25	193 131 423	0.212	16	104	38	103	70	102
50	32	193 131 424	0.228	16	104	38	103	70	120
63	20	193 131 432	0.428	25	134	44	126	70	115
63	25	193 131 433	0.431	25	134	44	126	70	115
63	32	193 131 434	0.425	25	134	44	126	70	130



WATER METER BOX

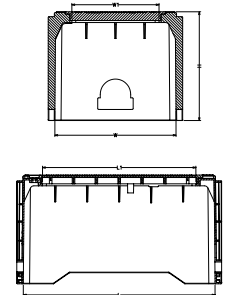
Code	Size (d)	H	D	D1	D2
	6"	237	180	141	65
	10"	257	331	254	86



WATER METER *

Description	15mm	20mm	25mm	40mm
Meter Thread	¾" BSP	1" BSP	1¼" BSP	2" BSP
End connection threads	½" BSP	¾" BSP	1" BSP	1½" BSP
Length of meter with coupling	250mm	290 mm	380 mm	430 mm
Length of meter without coupling	L	165mm	195 mm	225 mm
Height	H	110mm	113 mm	115 mm
Width	B	96mm	96 mm	100 mm
Weight with coupling		1.49 kg	1.80 kg	2.10 kg
			2.10 kg	5.50 kg

Note: * Dimensions are subject to change.



VALVE BOX

Code	Size (d)	L	L1	W	W1	H
	12"	504	403	319	229	286



PLASTIC FLOAT VALVE

Code	Size (d) (mm)	Working Pressure
	15MM Float Valve with Rod & Ball (AP)	1.52
	20MM Float Valve with Rod & Ball (AP)	1.52
	25MM Float Valve with Rod & Ball (AP)	1.52



BRASS FLOAT VALVE

Size	Pressure	Arm Length	Recommended Ball Float Size	Thread Size	Piston Seat	Tail Length	Recommended Operating Temp.
½"	LP/HP	8 ¾"	4½ - 6"	5/16 Whit	Nylon	1 ⅜"	0-85°C
¾"	LP/HP	13"	4½ - 6"	5/16 Whit	Nylon	1 ½"	0-85°C
1"	HP	16"	8"	7/16 Whit	Brass	1 ½"	0-85°C
1¼"	HP	16"	10-12"	9/16 Whit	Brass	1¾"	0-85°C
1½"	HP	18"	10-12"	5/8 Whit	Brass	1¾"	0-85°C
2"	HP	22"	10-12"	5/8 Whit	Brass	2"	0-85°C